

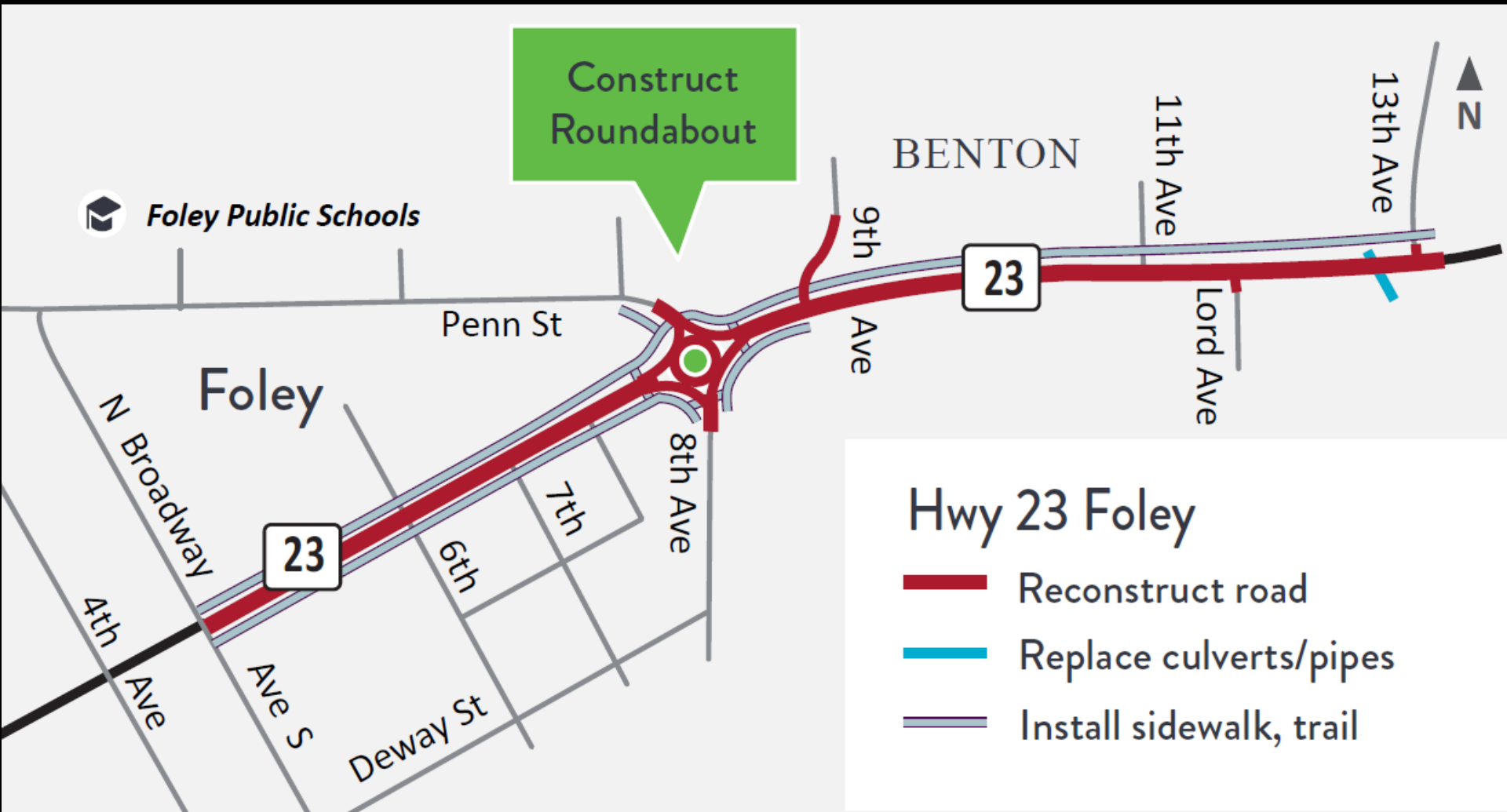
City of Foley Update

**BENTON ECONOMIC
PARTNERSHIP**

JANUARY 26, 2023



Highway 23 Construction City of Foley Location Map



Safety Improvements

- Reconstruct one mile of Hwy 23 from Broadway Ave to east of 13th Ave.
- Construct roundabout at 8th Ave/Penn St.
- Realign 9th Ave east of roundabout.
- Install pedestrian trails/sidewalks.



Safety Improvements

- Install pedestrian crossings at roundabout and Broadway Ave.
- Add curb/gutter and street lighting – urbanize the corridor.

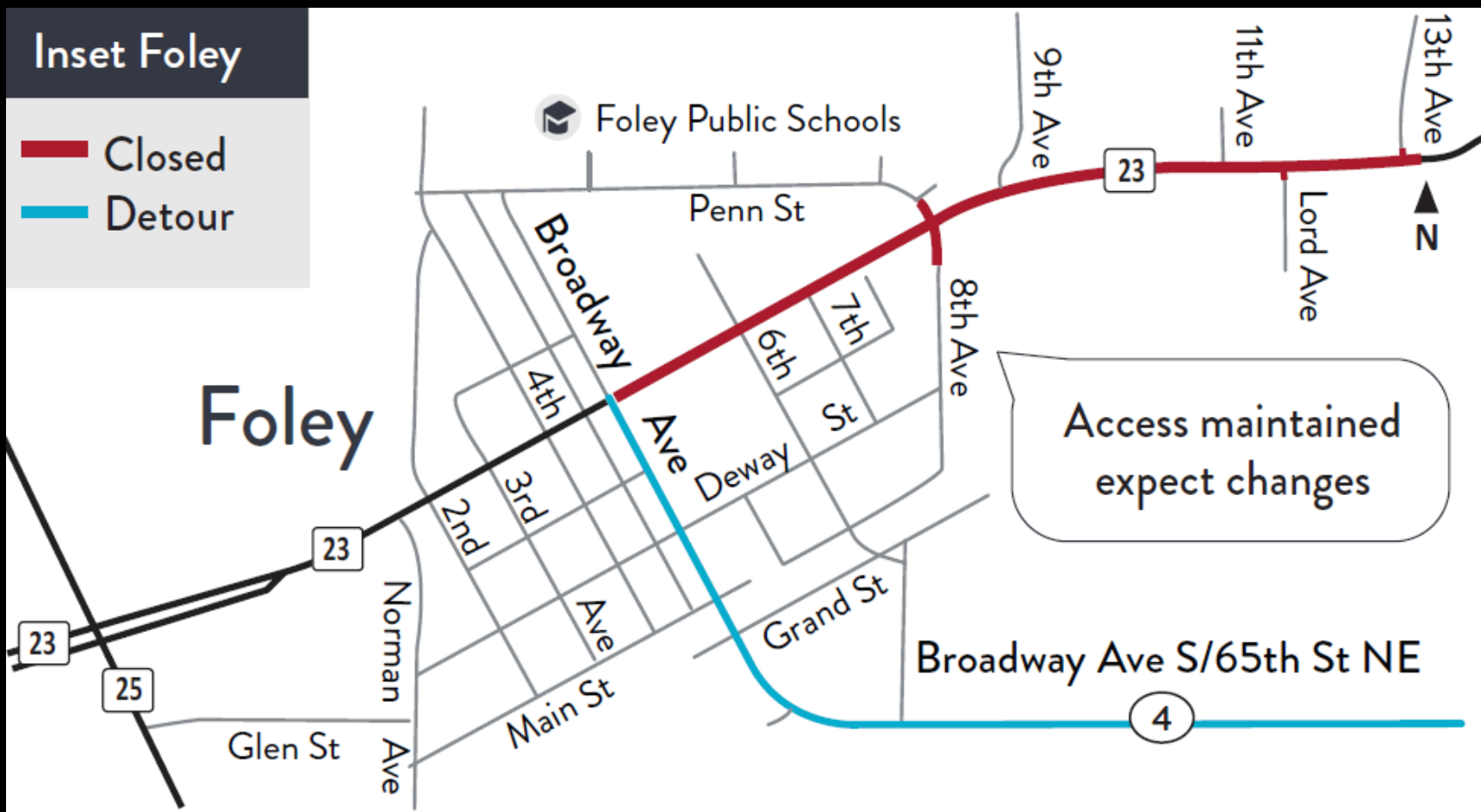


Other Improvements

- Water/Sewer/Storm Sewer relocations and improvements.
- Installation of fiber conduit along Highway 23 for future broadband expansion.

Continuing this spring....

Detour starting May 2023:





Wastewater Regionalization Project



History of Project

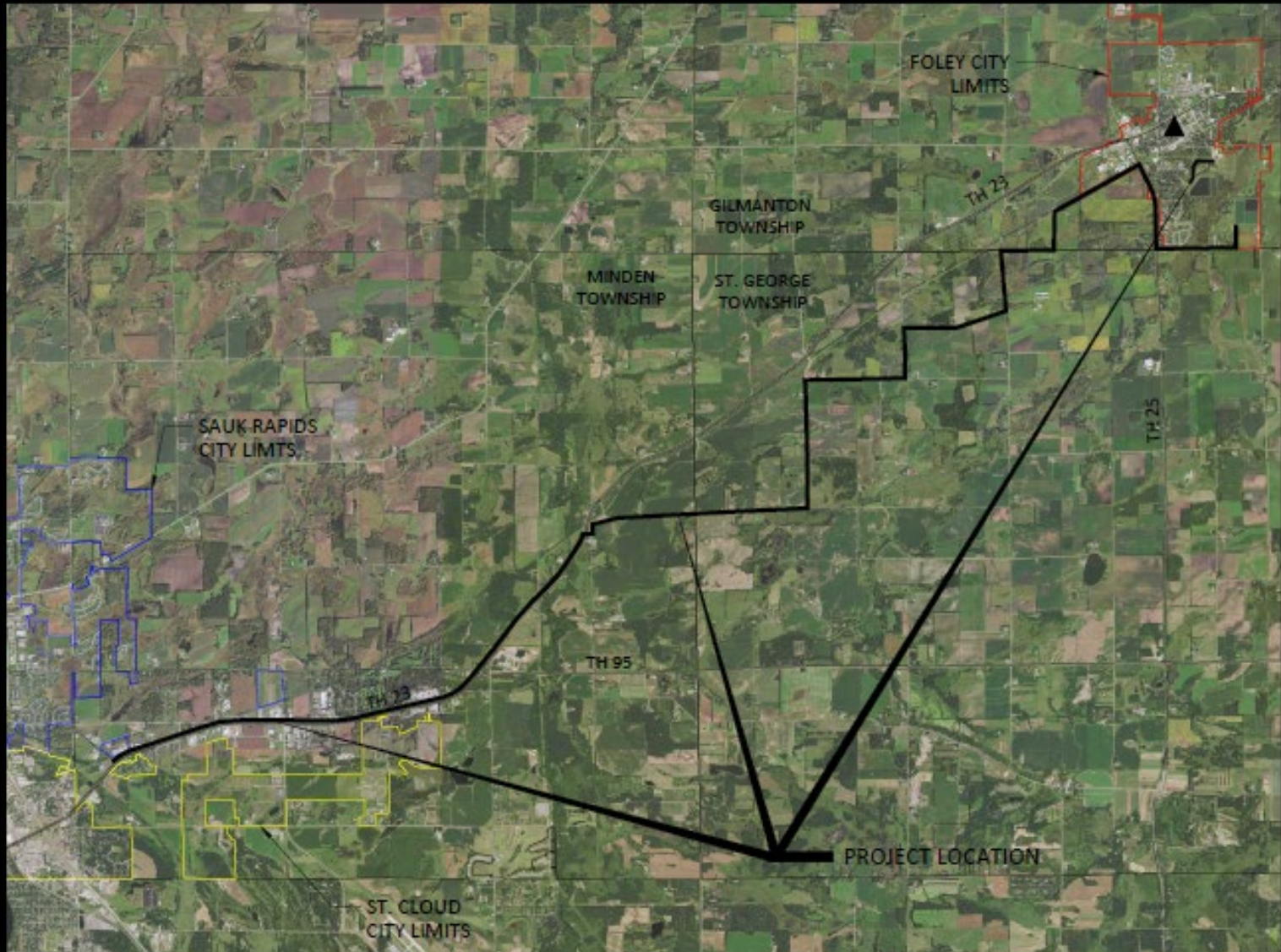
- 2017 – Facility Plan Process Initiated
 - No new sewer extensions = no new building allowed!
- 2019 – Facility Plan Approved
- 2019-2021 – Funding Applications/Awards
 - \$8 million in state bonding.
 - \$7 million in state grant funds – Still waiting on funds with state bonding bill!
- Construction Started Summer 2022 and continuing in 2023.
- Final hookup late summer/fall of 2023.

Why Regionalization?

- Long Term Treatment Option
 - Forcemain life expectancy is 60 years.
 - Equalization Pond builds in more flexibility.
- Partnership with other cities - strength in numbers.
- Support existing industry and business.
 - Wet industry & meat markets
- Water Quality Standards
 - Sulfates
 - Phosphorus
 - Nitrates
 - PFAS: Forever Chemicals




Forcemain Route







CITY OF FOLEY
Wastewater Regionalization
Groundbreaking


City Council: Denise Schaeffer, Mike Swanson, Tom Bland, Kenneth Winkler, Jeff Siskin
City Administrator: Tom Bland
Public Works Director: Mike Swanson

Tuesday, June 7th, 2022











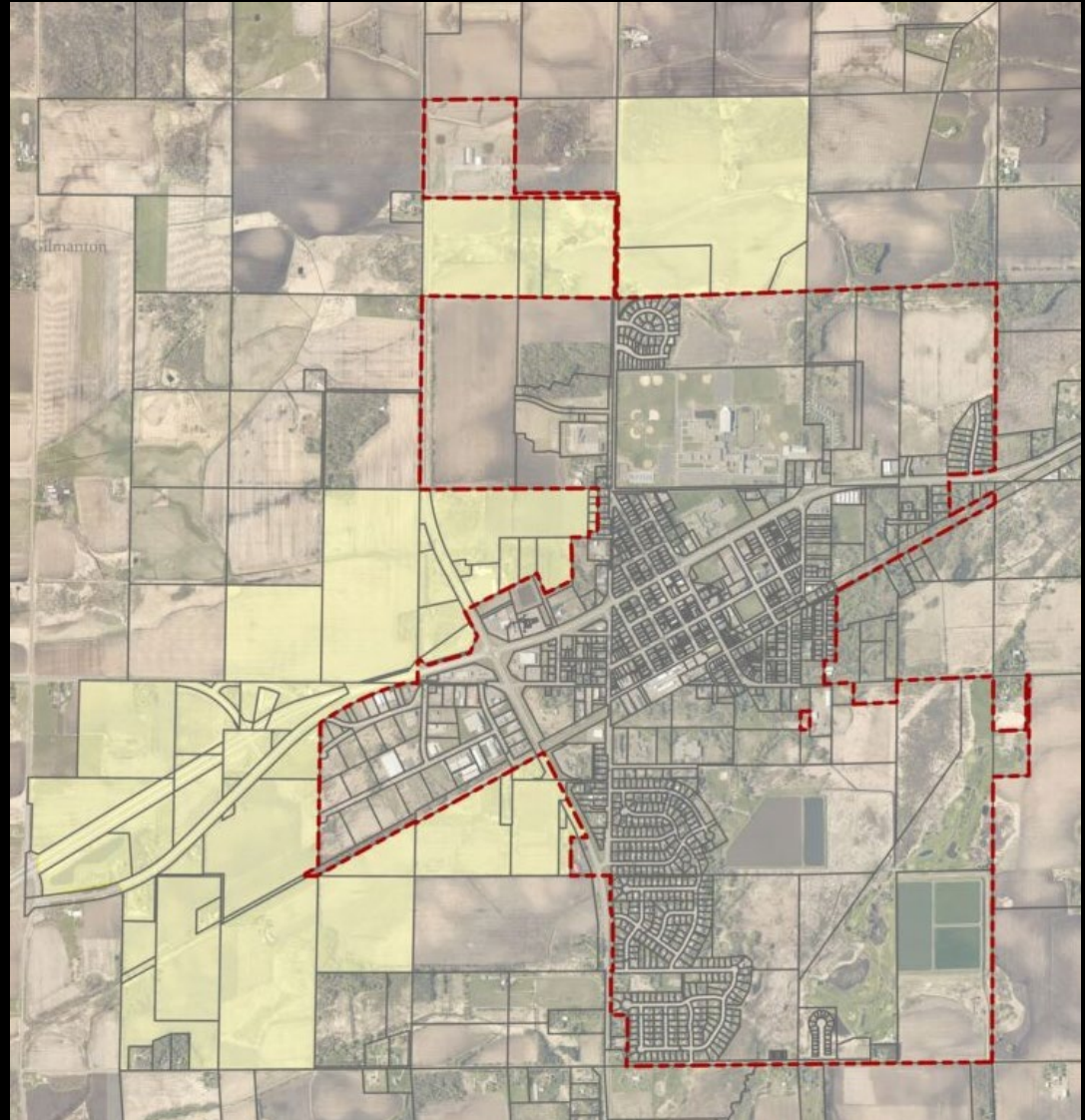


Project Details

- 15.8 miles of total forcemain (12 inches in diameter)
 - 8-20 feet deep
- 42 Air & Vacuum Release Manholes
- Wastewater Travel Time from Foley to St. Cloud – 20 hours
- Pipe volume when full = 489,850 gallons
- Elevation difference – St. Cloud is 106 feet lower than Foley

Planning for Growth

- Orderly Annexation Area - Gilmanton Township
 - 840 acres of potential growth area
 - Joint Planning Board established between City & Township



Planning for Growth

- Land Use Plan
 - Provides guidance for land use decisions in the City of Foley.
 - Adopted December of 2021

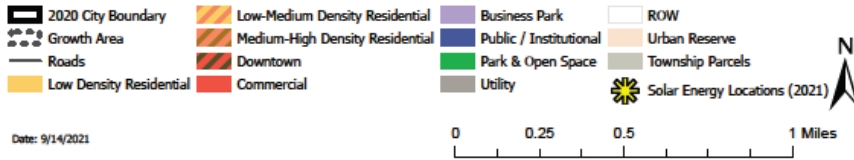
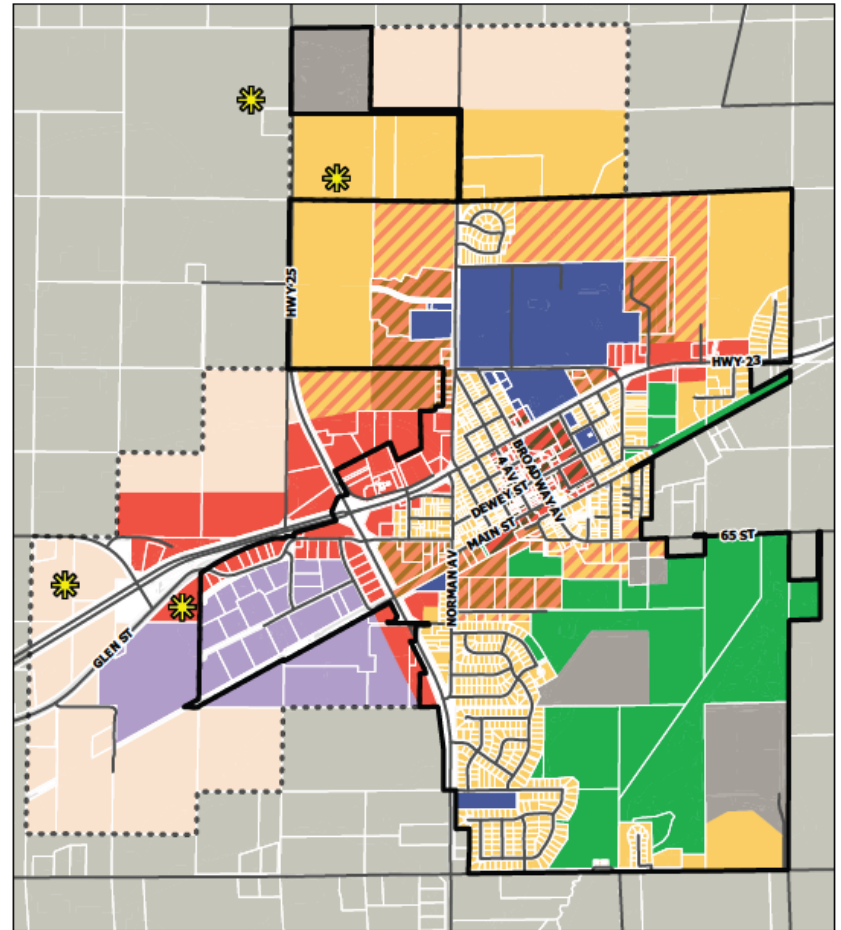


Figure 7. Future Land Use

Questions?

Sarah A. Brunn

City Administrator

City of Foley

Email: sbrunn@ci.foley.mn.us

Phone: 320-968-7260

